

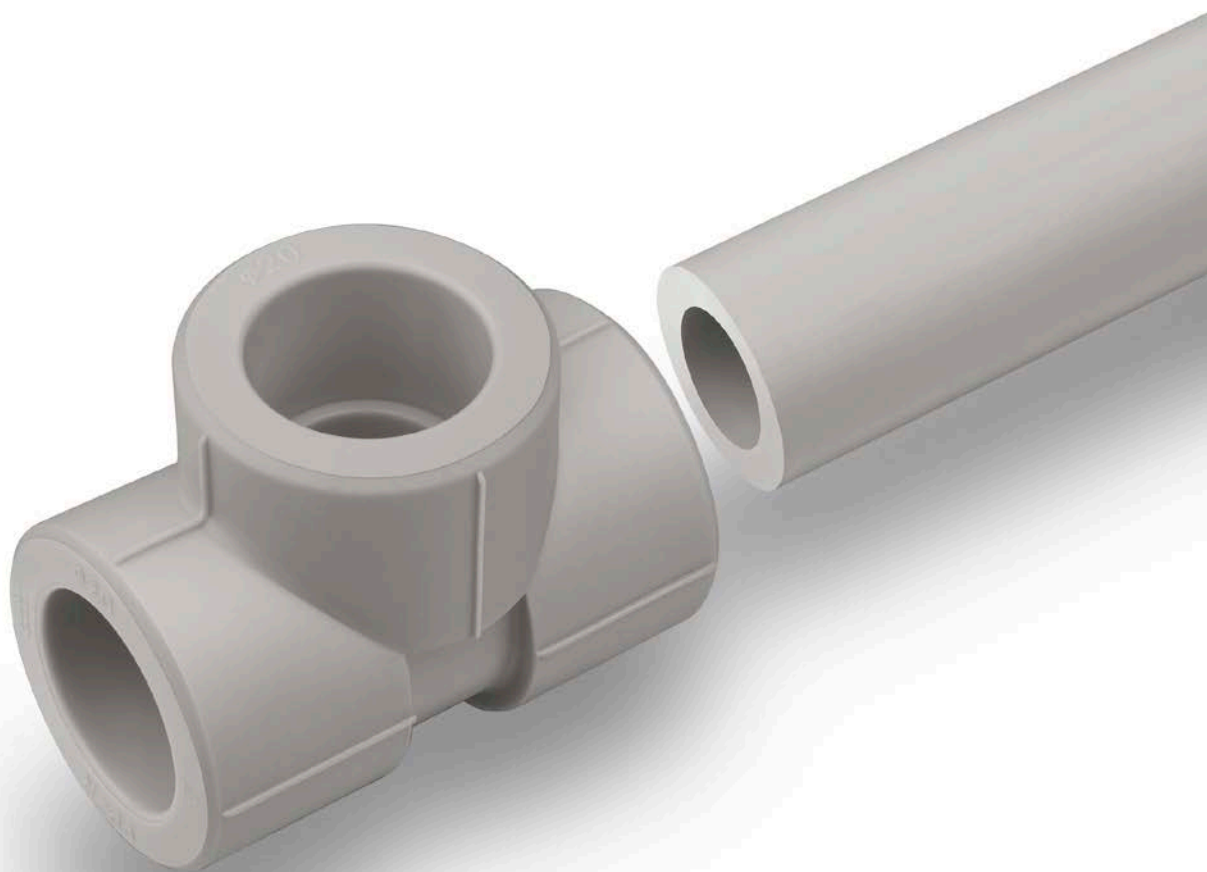
Ø 16-110 mm



SYSTEM **KAN-therm**

PP

High quality  
for reasonable price



TECHNOLOGIA SUKCESU



ISO 9001

# System KAN-therm PP - assortment

## pipe PN10 (S5/SDR11)

GROUP: L

Size	New code	*	Code	Packing	UM
20×1,9	1229 202002		04000120	4/200	m
25×2,3	1229 202004		04000125	4/160	m
32×2,9	1229 202006		04000132	4/80	m
40×3,7	1229 202009		04000140	4/60	m
50×4,6	1229 202010		04000150	4/40	m
63×5,8	1229 202012		04000163	4/24	m
75×6,8	1229 202014		04000175	4/20	m
90×8,2	1229 202016		04000190	4/12	m
110×10,0	1229 202000		04000111	4/8	m



## pipe PN16 (S3,2/SDR7,4)

GROUP: L

Size	New code	*	Code	Packing	UM
20×2,8	1229 203001		04000220	4/160	m
25×3,5	1229 203003		04000225	4/100	m
32×4,4	1229 203005		04000232	4/60	m
40×5,5	1229 203008		04000240	4/40	m
50×6,9	1229 203010		04000250	4/28	m
63×8,6	1229 203012		04000263	4/16	m
75×10,3	1229 203014		04000275	4/12	m
90×12,3	1229 203016		04000290	4/8	m
110×15,1	1229 203000		04000211	4/4	m



## pipe PN20 (S2,5/SDR6)

GROUP: L

Size	New code	*	Code	Packing	UM
16×2,7	1229 206031		04000316	4/200	m
20×3,4	1229 206033		04000320	4/160	m
25×4,2	1229 206035		04000325	4/100	m
32×5,4	1229 206037		04000332	4/60	m
40×6,7	1229 206039		04000340	4/40	m
50×8,3	1229 206041		04000350	4/28	m
63×10,5	1229 206043		04000363	4/16	m
75×12,5	1229 206045		04000375	4/12	m
90×15,0	1229 206047		04000390	4/8	m
110×18,3	1229 206029		04000311	4/4	m



## pipe PN16 (S3,2/SDR7,4) Stabi Al

GROUP: M

Size	New code	*	Code	Packing	UM
20×2,8	1229 206003		03800020	4/100	m
25×3,5	1229 206007		03800025	4/80	m
32×4,4	1229 206011		03800032	4/40	m
40×5,5	1229 206015		03800040	4/28	m
50×6,9	1229 206019		03800050	4/20	m
63×8,6	1229 206022		03800063	4/12	m
75×10,3	1229 206025		03800075	4/8	m



\* on request (delivery time up to 4 weeks)

\*\* availability by individual arrangements

\*\*\* till stock ends

pipe PN20 (S2,5/SDR6) Stabi AI

GROUP: M

Size	New code	*	Code	Packing	UM
16×2,7	1229 205003		03900016	4/160	m
20×3,4	1229 205005		03900020	4/100	m
25×4,2	1229 205007		03900025	4/80	m
32×5,4	1229 205009		03900032	4/40	m
40×6,7	1229 205012		03900040	4/28	m
50×8,3	1229 205015		03900050	4/20	m
63×10,5	1229 205018		03900063	4/12	m
75×12,5	1229 205021		03900075	4/8	m
90×15,0	1229 205000		03900090	4/8	m
110×18,3	1229 205002		03900011	4/4	m



pipe PN16 (S3,2/SDR7,4) Glass

GROUP: M

Size	New code	*	Code	Packing	UM
20×2,8	1229 204002		03810020	4/100	m
25×3,5	1229 204003		03810025	4/80	m
32×4,4	1229 204004		03810032	4/40	m
40×5,5	1229 204005		03810040	4/28	m
50×6,9	1229 204006		03810050	4/20	m
63×8,6	1229 204007		03810063	4/12	m
75×10,3	1229 204008		03810075	4/8	m
90×12,3	1229 204009		03810090	4/8	m
110×15,1	1229 204000		03810011	4/4	m



pipe PN20 (S2,5/SDR6) Glass

GROUP: M

Size	New code	*	Code	Packing	UM
20×3,4	1229 205025		03910020	4/100	m
25×4,2	1229 205026		03910025	4/80	m
32×5,4	1229 205027		03910032	4/40	m
40×6,7	1229 205011		03910040	4/28	m
50×8,3	1229 205014		03910050	4/20	m
63×10,5	1229 205017		03910063	4/12	m
75×12,5	1229 205020		03910075	4/8	m
90×15,0	1229 205024		03910090	4/8	m
110×18,3	1229 205001		03910011	4/4	m



saddle coupler PP x Push

GROUP: N

Size	New code	*	Code	Packing	UM
63 / 18×2	1209 238010		04118263	20/160	pc
75 / 18×2	1209 238011		04118275	20/160	pc
90 / 18×2	1209 238012		04118290	20/160	pc
110 / 18×2	1209 238009		04118211	20/160	pc



saddle coupler PP GW

GROUP: N

Size	New code	*	Code	Packing	UM
63×GW½	1209 230007		04118163	20/160	pc
75×GW½	1209 230009		04118175	20/160	pc
90×GW½	1209 230011		04118190	20/160	pc
110×GW½	1209 230003		04118111	20/160	pc



\* on request (delivery time up to 4 weeks)

\*\* availability by individual arrangements

\*\*\* till stock ends

**crossover****GROUP: N**

Size	New code	*	Code	Packing	UM
16	1209 036000		04101016	20	m
20	1209 036002		04101020	20	m
25	1209 036003		04101025	15	m
32	1209 036004		04101032	10	m

Crossover's diameter Ø150, length 370 mm.

**crossover****GROUP: N**

Size	New code	*	Code	Packing	UM
16	1209 269000		04102016	200	m
20	1209 269001		04102020	150	m
25	1209 269002		04102025	100	m
32	1209 269003		04102032	60	m

**straight coupling****GROUP: N**

Size	New code	*	Code	Packing	UM
16	1209 245001		04103016	80/1360	pc
20	1209 245002		04103020	100/700	pc
25	1209 245003		04103025	50/550	pc
32	1209 245004		04103032	40/280	pc
40	1209 245005		04103040	30/180	pc
50	1209 245006		04103050	110	pc
63	1209 245007		04103063	60	pc
75	1209 245008		04103075	45	pc
90	1209 245009		04103090	24	pc
110	1209 245000		04103011	16	pc



\* on request (delivery time up to 4 weeks)

\*\* availability by individual arrangements

\*\*\* till stock ends

## reducer

GROUP: N

Size	New code	*	Code	Packing	UM
20×16	1209 220004		04108020	100/1200	pc
25×16	1209 220005		04108025	50/1100	pc
25×20	1209 220006		04108026	100/900	pc
32×20	1209 220007		04108032	80/640	pc
32×25	1209 220008		04108033	80/560	pc
40×20	1209 220009		04108040	50/400	pc
40×25	1209 220010		04108041	50/350	pc
40×32	1209 220011		04108042	50/300	pc
50×32	1209 220000		04108050	30/180	pc
50×40	1209 220012		04108051	30/150	pc
63×32	1209 220013		04108063	100	pc
63×40	1209 220014		04108064	100	pc
63×50	1209 220015		04108065	100	pc
75×50	1209 220016		04108075	80	pc
75×63	1209 220017		04108076	50	pc
90×50	1209 220018		04108090	48	pc
90×63	1209 220019		04108091	45	pc
90×75	1209 220020		04108092	45	pc
110×63	1209 220001		04108012	27	pc
11075	1209 220002		04108013	27	pc
110×90	1209 220003		04108011	27	pc

**Caution:**

Reducers are intended for direct welding into the fitting socket.



## straight female connector

GROUP: N

Size	New code	*	Code	Packing	UM
16 × 1/2"	1209 050002		04103116	20/200	pc
20 × 1/2"	1209 050003		04103120	20/180	pc
20 × 3/4"	1209 050004		04103121	30/150	pc
25 × 1/2"	1209 050005		04103125	20/160	pc
25 × 3/4"	1209 050006		04103126	30/150	pc



## straight female connector

GROUP: N

Size	New code	*	Code	Packing	UM
32 × 3/4"	1209 050008		04103131	100	pc
32 × 1"	1209 050007		04103132	100	pc
40 × 1 1/4"	1209 050009		04103140	60	pc
50 × 1 1/2"	1209 050011		04103150	35	pc
63 × 2"	1209 050012		04103163	18	pc
75 × 2 1/2"	1209 050013		04103175	12	pc
90 × 3"	1209 050014		04103190	8	pc



**Caution:**

spanner can be used within the element.

\* on request (delivery time up to 4 weeks)

\*\* availability by individual arrangements

\*\*\* till stock ends

### straight male connector

GROUP: N

Size	New code	*	Code	Packing	UM
16×½"	1209 051003		04103216	20/160	pc
20×½"	1209 051004		04103220	20/160	pc
20×¾"	1209 051005		04103221	30/120	pc
25×½"	1209 051006		04103225	20/140	pc
25×¾"	1209 051007		04103226	30/120	pc



### straight male connector

GROUP: N

Size	New code	*	Code	Packing	UM
32×¾"	1209 051009		04103231	80	pc
32×1"	1209 051008		04103232	80	pc
40×1¼"	1209 051010		04103240	50	pc
50×1½"	1209 051012		04103250	36	pc
63×2"	1209 051013		04103263	18	pc
75×2½"	1209 051014		04103275	10	pc
90×3"	1209 051015		04103290	6	pc

**Caution:**  
spanner can be used within the element



### elbow 90°

GROUP: N

Size	New code	*	Code	Packing	UM
16	1209 068010		04104016	50/900	pc
20	1209 068011		04104020	100/500	pc
25	1209 068012		04104025	50/350	pc
32	1209 068013		04104032	20/200	pc
40	1209 068014		04104040	20/120	pc
50	1209 068015		04104050	60	pc
63	1209 068016		04104063	32	pc
75	1209 068017		04104075	20	pc
90	1209 068018		04104090	12	pc
110	1209 068009		04104011	8	pc



### nipple elbow 90°

GROUP: N

Size	New code	*	Code	Packing	UM
16	1209 068022		04104216	50/1000	pc
20	1209 068023		04104220	100/600	pc
25	1209 068024		04104225	50/400	pc
32	1209 068025		04104232	50/200	pc



\* on request (delivery time up to 4 weeks)

\*\* availability by individual arrangements

\*\*\* till stock ends

**elbow 45°**

**GROUP: N**

Size	New code	*	Code	Packing	UM
16	1209 068000		04104316	50/950	pc
20	1209 068001		04104320	100/700	pc
25	1209 068002		04104325	50/400	pc
32	1209 068003		04104332	40/200	pc
40	1209 068004		04104340	20/140	pc
50	1209 068005		04104350	80	pc
63	1209 068006		04104363	40	pc
75	1209 068007		04104375	25	pc
90	1209 068008		04104390	14	pc



**nipple elbow 45°**

**GROUP: N**

Size	New code	*	Code	Packing	UM
16	1209 068019		04104116	50/1050	pc
20	1209 068020		04104120	100/700	pc
25	1209 068021		04104125	50/450	pc



**wallplate elbow**

**GROUP: N**

Size	New code	*	Code	Packing	UM
16 × 1/2"	1209 069006		04104416	20/140	pc
20 × 1/2"	1209 069007		04104420	20/140	pc
25 × 1/2"	1209 069008		04104425	20/120	pc



**male elbow 90°**

**GROUP: N**

Size	New code	*	Code	Packing	UM
16 × 1/2"	1209 070000		04104516	20/140	pc
20 × 1/2"	1209 070001		04104520	30/90	pc
20 × 3/4"	1209 070002		04104521	30/90	pc
25 × 1/2"	1209 070003		04104525	20/120	pc
25 × 3/4"	1209 070004		04104526	30/90	pc
32 × 3/4"	1209 070005		04104532	30/60	pc
32 × 1"	1209 070006		04104534	50	pc



**elbow with female thread**

**GROUP: N**

Size	New code	*	Code	Packing	UM
16 × 1/2"	1209 069000		04104616	20/180	pc
20 × 1/2"	1209 069001		04104620	20/140	pc
20 × 3/4"	1209 069002		04104621	30/120	pc
25 × 1/2"	1209 069003		04104625	20/120	pc
25 × 3/4"	1209 069004		04104626	30/120	pc
32 × 3/4"	1209 069005		04104632	30/90	pc
32 × 1"	1209 069009		04104634	50	pc



\* on request (delivery time up to 4 weeks)

\*\* availability by individual arrangements

\*\*\* till stock ends

## reducing tee

GROUP: N

Size	New code	*	Code	Packing	UM
20×16×20	1209 257011		04105020	20/380	pc
25×16×25	1209 257012		04105025	20/260	pc
25×20×25	1209 257013		04105026	20/240	pc
32×16×32	1209 257016		04105032	20/140	pc
32×20×32	1209 257017		04105033	20/140	pc
32×25×32	1209 257018		04105034	20/140	pc
40×20×40	1209 257019		04105040	20/80	pc
40×25×40	1209 257020		04105041	15/90	pc
40×32×40	1209 257021		04105042	15/90	pc
50×20×50	1209 257022		04105050	60	pc
50×25×50	1209 257023		04105051	65	pc
50×32×50	1209 257024		04105052	60	pc
50×40×50	1209 257025		04105053	50	pc
63×32×63	1209 257026		04105063	30	pc
63×40×63	1209 257027		04105064	22	pc
63×50×63	1209 257028		04105065	22	pc
75×40×75	1209 257029		04105075	17	pc
90×50×90	1209 257030		04105090	12	pc
90×63×90	1209 257031		04105091	10	pc
90×75×90	1209 257032		04105092	12	pc



## tee

GROUP: N

Size	New code	*	Code	Packing	UM
16	1209 257001		04105116	40/640	pc
20	1209 257002		04105120	80/400	pc
25	1209 257003		04105125	20/240	pc
32	1209 257004		04105132	20/140	pc
40	1209 257005		04105140	15/75	pc
50	1209 257006		04105150	50	pc
63	1209 257007		04105163	24	pc
75	1209 257008		04105175	15	pc
90	1209 257009		04105190	10	pc
110	1209 257000		04105111	8	pc



## corner tee

GROUP: N

Size	New code	*	Code	Packing	UM
20	1209 257010		04105416	40/360	pc



## four way fitting

GROUP: N

Size	New code	*	Code	Packing	UM
16	1209 057000		04106016	80/480	pc
20	1209 057001		04106020	40/320	pc



\* on request (delivery time up to 4 weeks)

\*\* availability by individual arrangements

\*\*\* till stock ends



## tee with male thread

GROUP: N

Size	New code	*	Code	Packing	UM
20×½"	1209 259000		04105316	20/120	pc



## tee with female thread

GROUP: N

Size	New code	*	Code	Packing	UM
16×½"×16	1209 258000		04105216	20/140	pc
20×½"×20	1209 258002		04105220	20/120	pc
20×¾"×20	1209 258003		04105221	30/90	pc
25×½"×25	1209 258004		04105225	20/180	pc
25×¾"×25	1209 258005		04105226	30/180	pc
32×¾"×32	1209 258006		04105232	15/60	pc
32×1"×32	1209 258007		04105233	15/60	pc



## straight union with gasket

GROUP: N

Size	New code	*	Code	Packing	UM
20×¾"	1209 065001		04107020	20/200	pc



## half union with flat gasket

GROUP: N

Size	New code	*	Code	Packing	UM
16×¾"	1209 105000		04107116	50/300	pc
20×¾"	1209 105001		04107120	50/400	pc
25×1"	1209 105002		04107125	20/100	pc



## union with flat gasket

GROUP: N

Size	New code	*	Code	Packing	UM
16×½"	1209 271000		04107216	20/200	pc
20×½"	1209 271001		04107220	20/200	pc
20×¾"	1209 271002		04107221	20/200	pc
25×¾"	1209 271004		04107225	20/100	pc
25×1"	1209 271003		04107226	20/100	pc
32×1"	1209 272000		04107232	20/60	pc



## flange with flat O-Ring seal

GROUP: N

Size	New code	*	Code	Packing	UM
40	1209 091016		04109340	1/40	pc
50	1209 091017		04109350	1/30	pc
63	1209 091018		04109360	1/20	pc
75	1209 091019		04109375	1/15	pc
90	1209 091020		04109390	1/10	pc
110	1209 091015		04109310	1/6	pc



\* on request (delivery time up to 4 weeks)

\*\* availability by individual arrangements

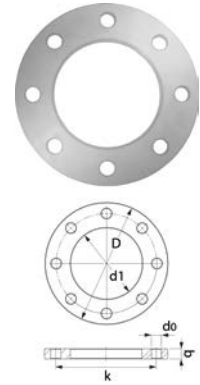
\*\*\* till stock ends

## steel flange PN16

GROUP: N

Size	New code	*	Code	Packing	UM
40	1209 091002		04109140	1	pc
50	1209 091003		04109150	1	pc
63	1209 091004		04109163	1	pc
75	1209 091005		04109175	1	pc
90	1209 091006		04109190	1	pc
110	1209 091001		04109110	1	pc

DN	D	d1	k	d0	q	N
32	140	43	100	18	18	4
40	150	53	110	18	18	4
50	165	66	125	18	20	4
65	185	78	145	18	20	8
80	200	95	160	18	20	8
100	220	114	180	18	22	8



## stop end

GROUP: N

Size	New code	*	Code	Packing	UM
16	1209 025001		04110016	100/1000	pc
20	1209 025002		04110020	200/1000	pc
25	1209 025003		04110025	100/700	pc
32	1209 025004		04110032	50/500	pc
40	1209 025005		04110040	50/250	pc
50	1209 025006		04110050	170	pc
63	1209 025007		04110063	80	pc
75	1209 025008		04110075	50	pc
90	1209 025009		04110090	30	pc
110	1209 025000		04110011	20	pc



## ball valve

GROUP: N

Size	New code	*	Code	Packing	UM
20	1209 278001		04111220	10/90	pc
25	1209 278002		04111225	10/50	pc
32	1209 278014		04111232	5/25	pc
40	1209 278003		04111240	5/15	pc
50	1209 278004		04111250	2/10	pc
63	1209 278005		04111263	2/8	pc
75	1209 278006		04111275	1/5	pc



## globe valve

GROUP: N

Size	New code	*	Code	Packing	UM
20	1209 280000		04112220	1/30	pc
25	1209 280001		04112225	1/30	pc
32	1209 280002		04112232	1/30	pc



\* on request (delivery time up to 4 weeks)

\*\* availability by individual arrangements

\*\*\* till stock ends

## concealed globe valve

GROUP: N

Size	New code	*	Code	Packing	UM
20	1209 280006		04113220	1/30	pc
25	1209 280007		04113225	1/30	pc
32	1209 280008		04113232	1/30	pc

Valves delivered with two plugs for marking hot water (red) or cold water (blue).



## concealed globe valve with masking and mini handle

GROUP: N

Size	New code	*	Code	Packing	UM
20	1209 280003		04114220	1/30	pc
25	1209 280004		04114225	1/30	pc
32	1209 280005		04114232	1/30	pc



## pipe clamp

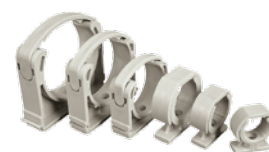
GROUP: N

Size	New code	*	Code	Packing	UM
16	1209 107030		04111016	20/1000	pc
20	1209 107031		04111020	20/800	pc
25	1209 107032		04111025	20/700	pc
32	1209 107033		04111032	20/440	pc
40	1209 107034		04111040	20/300	pc
50	1209 107035		04111050	20/240	pc
63	1209 107036		04111063	20/120	pc
75	1209 107037		04111075	20/100	pc
90	1209 107038		04111090	10/60	pc

**Caution:**

Use only for uniform pipes.

For Stabi pipes use clamps with rubber insert.



## single pipe clamp with rubber dumper - double-sided lock with metric thread

GROUP: A

Size	New code	*	Code	Packing	UM
15-18	1700 081025		UP-G16	100	pc
20-23	1700 081028		UP-G20	100	pc
25-28	1700 081029		UP-G25	100	pc
32-36	1700 081030		UP-G32	50	pc
40-44	1700 081031		UP-G40	50	pc
47-52	1700 081032		UP-G50	50	pc
57-63	1700 081034		UP-G63	50	pc
75	1700 081035		UP-G75	25	pc
90	1700 081036		UP-G90	25	pc
110	1700 081023		UP-G110	25	pc

**Caution:**

Single pipe clamp with rubber dumper contains the closing screws (code WK 8x70) and extension anchor (code KR-12).



\* on request (delivery time up to 4 weeks)

\*\* availability by individual arrangements

\*\*\* till stock ends

### double pipe clamp with rubber dumper - double-sided lock with metric thread

GROUP: A

Size	New code	*	Code	Packing	UM
16	1700 081019		UD-G16	50	pc
20	1700 081020		UD-G20	50	pc
25	1700 081021		UD-G25	50	pc
32	1700 081022		UD-G32	50	pc

**Caution:**

Single pipe clamp with rubber dumper contains the closing screws (code WK 8x70) and extension anchor (code KR-12).



### plastic mounting plate

GROUP: N

Size	New code	*	Code	Packing	UM
16-25	1209 210000		04111000	30/150	pc



## Tools PP

### coarse file for Stabi Al pipe

GROUP: K

Size	New code	*	Code	Packing	UM
16/20	1933 267041		04212016	1	pc
20/25	1933 267043		04212020	1	pc
25/32	1933 267045		04212025	1	pc
32/40	1933 267047		04212032	1	pc
50	1933 267049		04212050	1	pc
63	1933 267051		04212063	1	pc
75	1933 267053		04212075	1	pc
90	1933 267055		04212090	1	pc
110	1933 267039		04212011	1	pc



### coarse file blade - service element

GROUP: K

New code	*	Code	Packing	UM
1933 267035	*	04210000	1	pc



### pipe cutters

GROUP: K

Size	New code	*	Code	Packing	UM
16-40 mm	1933 267029		04212200	1	pc



### roll-cutters

GROUP: K

Size	New code	*	Code	Packing	UM
50-100 mm	1933 267032		04212201	1	pc



\* on request (delivery time up to 4 weeks)

\*\* availability by individual arrangements

\*\*\* till stock ends

## welding machine

GROUP: K

Size, power	New code	*	Code	Packing	UM
16-50mm, 800W	1933 267062		04212100	1	pc
63-110mm, 1600W	1933 267064		04212101	1	pc

**Caution:**

Every set includes: electric welding machine, welding machine's stand, metal box, set of inserts (depending on the diameter).



## long clamping screw for welding machine PP - maintenance component - service element

GROUP: K

New code	*	Code	Packing	UM
1933 267037	*	04212104	1	pc



## tool kit for saddle coupler assembly

GROUP: K

Size	New code	*	Code	Packing	UM
63	1933 267006		04212463	1	pc
75	1933 267007		04212475	1	pc
90	1933 267008		04212490	1	pc
110	1933 267002		04212411	1	pc

The set includes a female and male connector and a mounting screw (hexagonal).  
Sockets to saddle connector welding are not included in the welding sets (1933 267062, 1933 267064).



## drill for saddle connectors

GROUP: k

Size	New code	*	Code	Packing	UM
25	1933 267038		04212425	1	pc



## welding sockets

GROUP: K

Size	New code	*	Code	Packing	UM
16	1933 267011		04212316	1	set
20	1933 267013		04212320	1	set
25	1933 267015		04212325	1	set
32	1933 267017		04212332	1	set
40	1933 267019		04212340	1	set
50	1933 267021		04212350	1	set
63	1933 267023		04212363	1	set
75	1933 267025		04212375	1	set
90	1933 267027		04212390	1	set
110	1933 267009		04212311	1	set

**Caution:**

Welding sockets are sold in sets (pc), welding socket for the fitting and a pipe.

